

**FOR QUESTIONS AND QUOTES
PLEASE CONTACT US BELOW:**



CONTACT INFO:

Kelso Technologies Inc.

2777 Finley Road, Suite 15

Downers Grove, IL 60515

630-495-1151

sales@kelsotech.com



**PRESSURE
DIFFERENTIAL
PARTS**



**ALL PRODUCTS PROUDLY
MADE IN THE USA**

ISO 9001 CERTIFIED



WHO WE ARE...

Kelso Technologies has partnered with Bulk Tank Inc. to launch our new PD Hopper division providing innovative, quality, American made parts for the railcar industry.

Utilizing special formulated food grade approved materials, the products were developed to last and exceed our customers' expectations.



Proud Member



KELSO/BTI PD BUTTERFLY VALVES

Kelso/BTI PD Butterfly valve bodies are offered in Aluminum or Composite body, available in sizes 2" - 6" other sizes available upon request.

- The casted body is designed with a tongue in groove for the seat to ensure a tight fit with no slippage or possible product leakage.
- The composite body offers 1/2 the weight of a standard Aluminum body and is corrosion resistant and less expensive than Aluminum. It withstands harsh environments and it is the longest lasting body available on the market today.
- The stem is made from stainless steel (standard), has a double o-ring at top and bottom and is designed with a double "D" at connection into disc. This allows for a smaller hub, increases flow uses less torque and guaranteed strength.

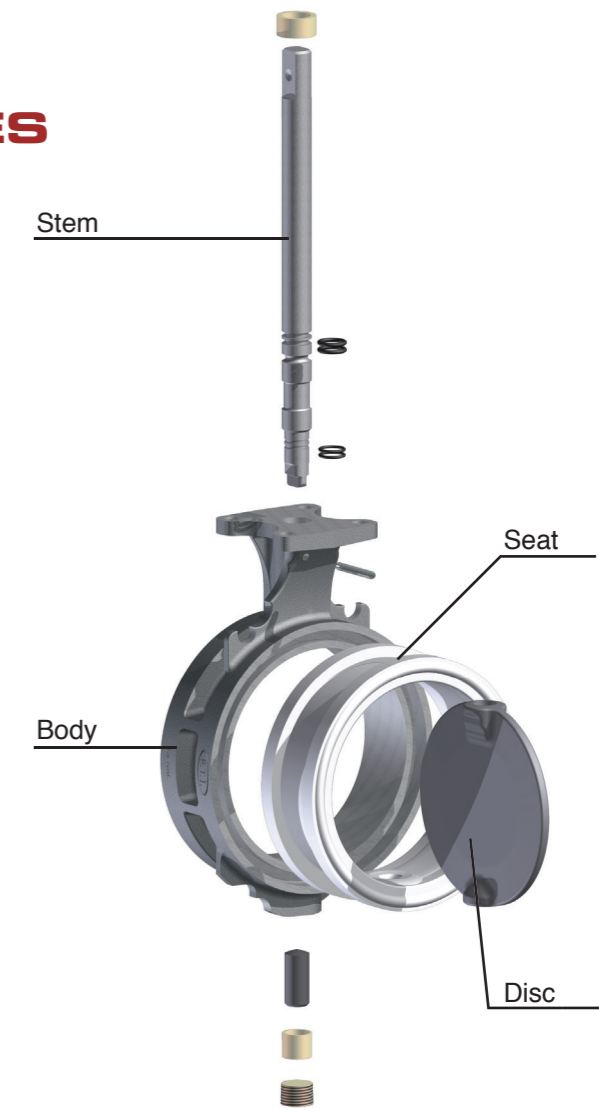
CHOOSE YOUR DISC MATERIAL:

- Ductile
- Stainless Steel
- **AlloMaxx:** AlloMaxx is a forged aluminum alloy material that increases strength and is less expensive than stainless steel.

CHOOSE YOUR SEAT MATERIAL:

- Good for Dry bulk material: Flour, Sugar, Salt, Starch, Frac Sand, Fly Ash, Plastic Pellets, Sand, Cement, Lime, Clay, and carbon applications.
- **Utility (Better)** - White/black Food Grade approved Buna; rated -40°F to 225°F
 - **MaxxLife (Best)**-White/black Food Grade approved hi-temp special compound; rated -40-400°F

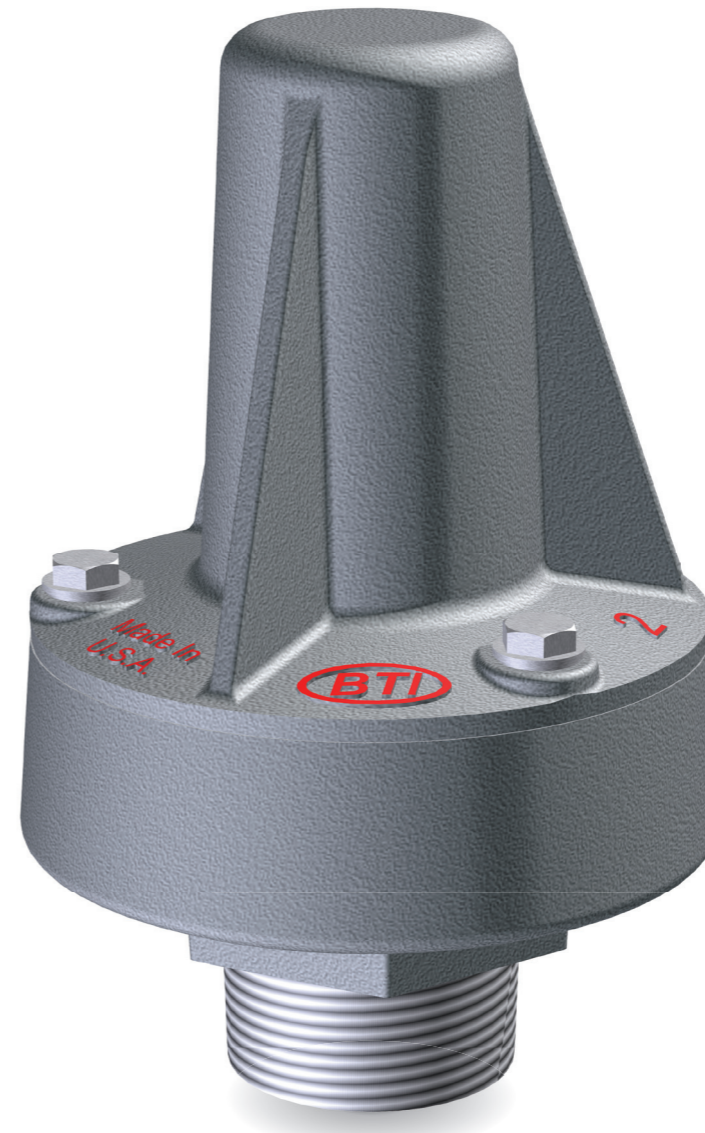
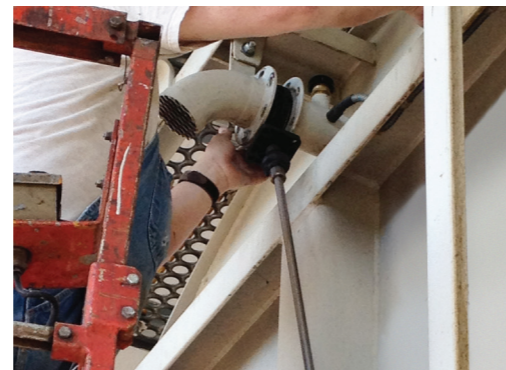
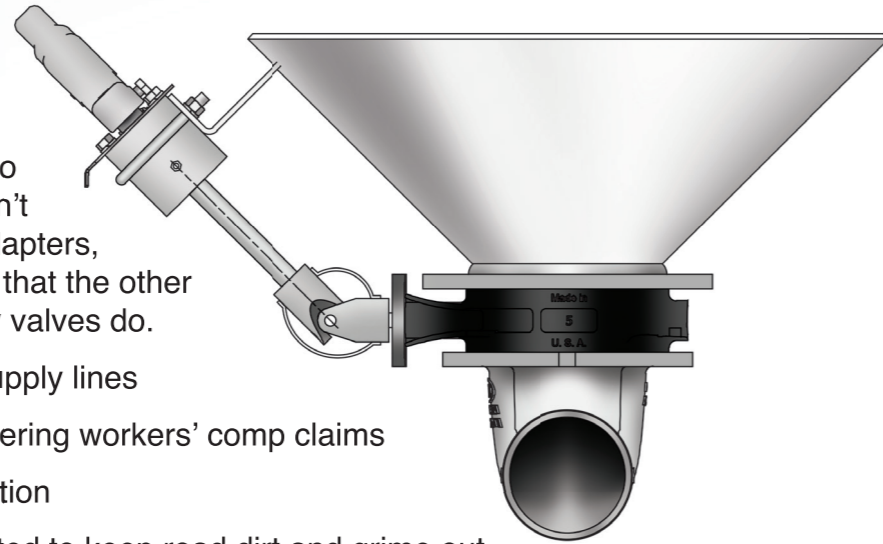
Guaranteed to keep pliability in extreme temperatures. These valves feature no external hardware on the disc and stem which increases flow rate 30%. The HD handles are Aluminum with stainless steel trigger and top plate. It is assembled with roll pins instead of bolts and the stem/packing is sealed to keep out debris to offer long-lasting operation of the valve.



B.T.I.
EasyAccess™
 Multi-Angle Butterfly Valve Neck Extension

FEATURES:

- Extendable neck for ease of operation
- 1-piece direct drive stem to disc connection and doesn't require any connecting adapters, welded parts or hardware that the other industry standard butterfly valves do.
- Keeps user clear of hot supply lines
- Reduces back strain - lowering workers' comp claims
- Multi-Angle to fit any situation
- Lubrication Chamber Booted to keep road dirt and grime out
- Stem Extensions: 3" - 48"

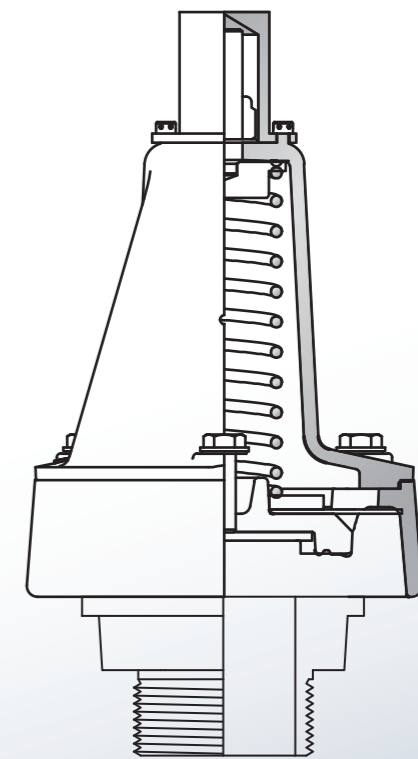
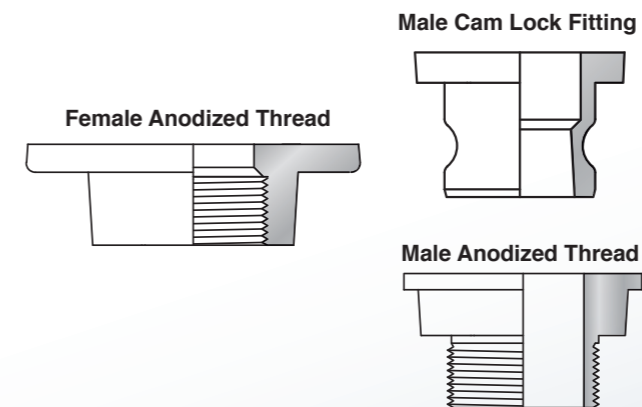


B.T.I. **All-in ONE**
 Pressure Relief Valve

2" sizes offered with pressure ratings of 5-30 PSI - all S.S. internals, featuring long-life coil springs fully encapsulated to reduce risk of contamination, high to low temp range and Food grade compliant seat.

- Bell design offers more surface area and less back pressure.
- Tamper proof body with hole in body to secure to car.
- Male cam lock fittings with both male and female Anodized threads available.

AVAILABLE CONNECTIONS



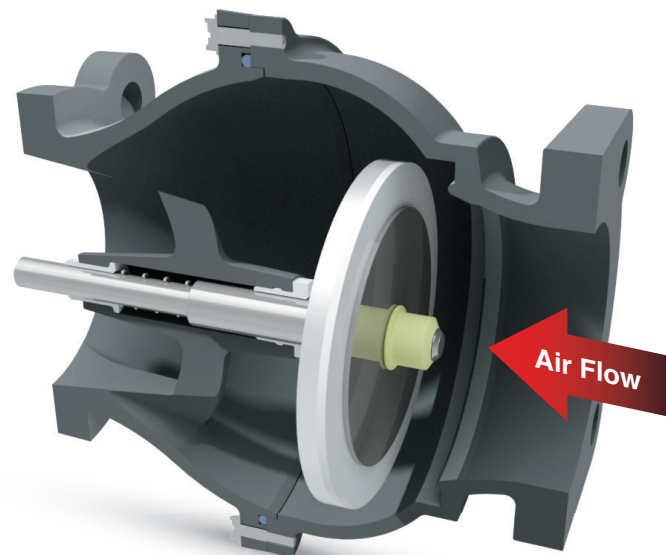
All-in One Pressure Relief Cut Away

OPTIMA
CHECK VALVES BY B.T.I.



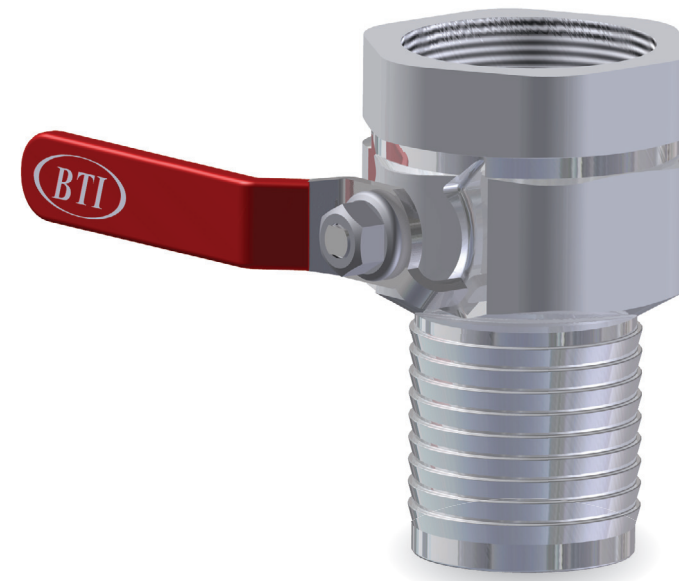
Offered in 3" and 4" size, now with flat face poppet with no fasteners that allows more surface area for flow and less back pressure.

- Encapsulated long-life coiled spring minimizes risk of contamination.
- Molded gasket seat
- Verified over 1,000,000 cycles with no spring failure



Optima Check Valve
Flat Face Poppet

Ultra-Lightweight Aeration Butterfly Valve



- Lightweight Aluminum body direct in-line replacement for ball valves- no more brass.
- Internals are all S.S. standard, high temp seat standard.
- Reduces inventory, one component valve versus multiple parts to stock.
- Multiple configurations offered for connections.

SpinFlow[™]
AERATION SYSTEM



- Conventional Aeration pads grow mold and have to be cleaned, this valve provides the aeration you need without the mess and contamination.
- 1-3 port configurations, 20% faster unloading.
- Prevents back flush, Food Grade blue and white rubbers designed for long-life.
- Increased pressure velocity, the Spin Flow sweeps your Hopper clean!